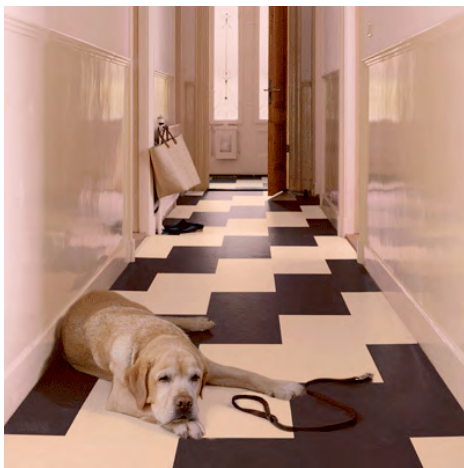




MARMOLEUM A/K/A NATURAL LINOLEUM

Natural Raw Materials

Linoleum is produced from renewable materials: linseed oil, rosins, wood flour, jute and ecologically responsible pigments. The harvesting or extraction of these raw materials consumes relatively little energy.



Pricing:

12" x 12" CLICK-Floating

MARMOLEUM..12" x 12" Carton = 6.89 s.f.

Apprx.) "-) /s.f.

12" x 36" CLICK-Floating

MARMOLEUM..12" x 36" Carton = 20.56 s.f.

Apprx.5.&5/s.f.



CORK FLOORING



- Sustainable Natural Resource

Cork is a natural wood product from the outer bark of the cork oak, a species of tree native to the Mediterranean region. The bark is harvested from the trees without felling the trees. About one third of the trunk is stripped, approximately every nine years. The trees live-on until reaching full maturity after about 150 years and is then replaced by a young tree.

- The Quiet Wood

Cork has a cellular structure that absorbs sound waves. The bouncing of sound waves, called reverberation, is much less than it is with solid wood, wood laminate, and imitation wood flooring. Sound transfer from adjacent upper levels of the building is also reduced, especially if a cork underlayment is added to the cork flooring installation.

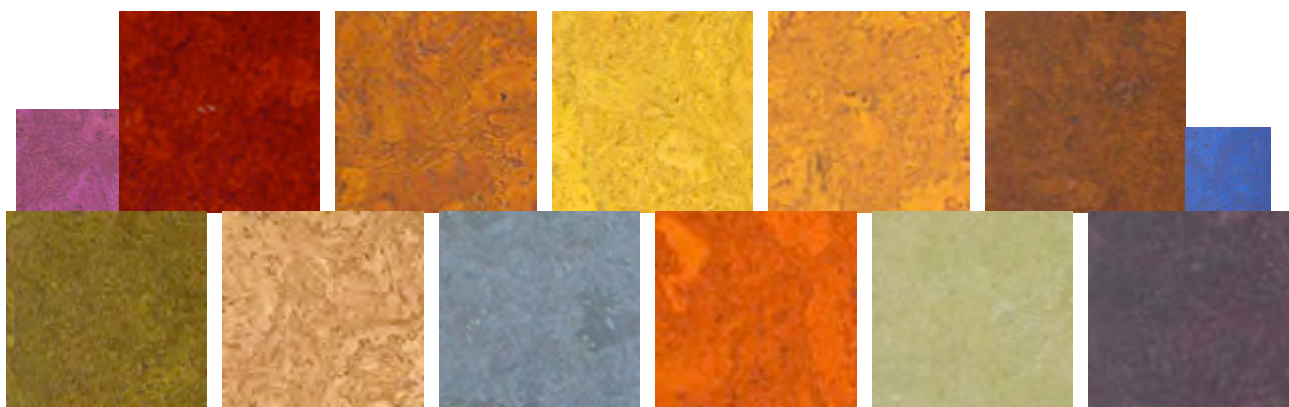
- A Long Life Span

Cork is an excellent flooring material because, although it feels hard when you touch it, it is slightly resilient. The ability of cork to bounce back after being walked on increases the life span of the flooring. In residential settings cork flooring is a lifetime investment if cleaned and maintained properly.

- Easy to Care For

Our cork flooring has an acrylic matte finish applied to its surface. Normal sweeping or vacuuming, wiping up spills and excess moisture immediately, and the use of walk-on mats at entrance doors is all that is needed for daily care. For overall cleaning a damp mopping will remove built up dirt without harming the cork floor.

Approx. \$ 1.80 – \$ 2.50 per square foot





HOMEGROWN WOOD
Locally Harvested FSC Certified Wood

WOOD HARDNESS RATING

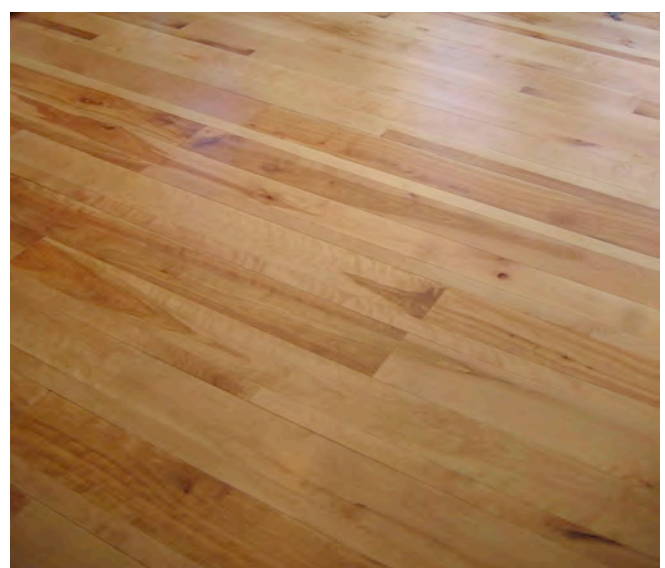
- Sugar Maple – 1450
- White Ash – 1320
- Beech – 1300
- Red Oak – 1290
- Birch – 1260
- Cherry / Red Maple – 950



Species	Description	Price Per Sq.Ft.
ASH, BEECH, RED MAPLE, RED OAK, YELLOW/BLACK BIRCH, SUGAR MAPLE, CHERRY	Random Width - 2 1/4", 3-5" width, 96" length	~ (" & E ") "-)



Sugar Maple



Yellow/Black Birch



EcoTimber Flooring

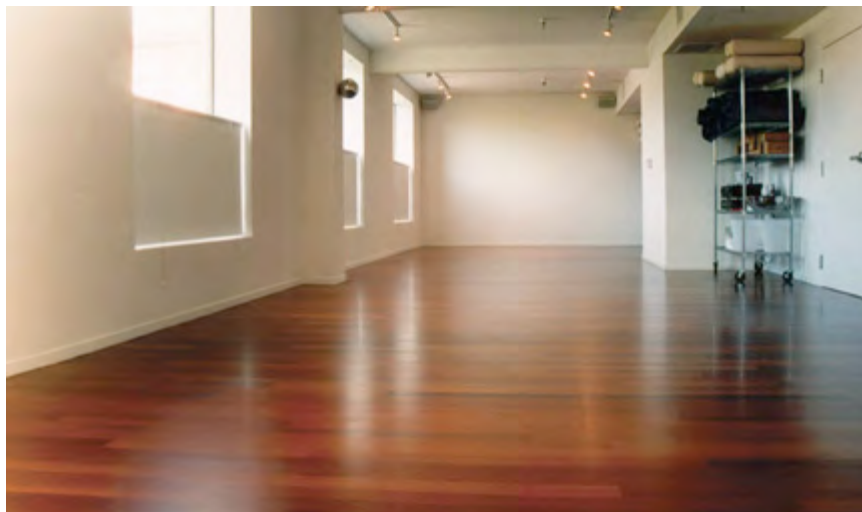
EcoTimber® engineered flooring has all the benefits of laminated flooring—including superior stability and easy installation—and the look of solid wood. In engineered flooring, a surface layer of high-quality hardwood is bonded to two wood sub-layers. Cross-ply construction makes the product more stable than solid wood. Our wear layers are among the thickest on the market: 3.6mm (just over .14"), allowing many more sandings than the typical engineered floor's 1/10-inch "veneer" layer.

EcoTimber engineered flooring can be nailed down like solid flooring, glued directly to concrete, or "floated" (gluing the planks to each other and not to the subfloor). Because they are prefinished, these products do not have to be sanded and finished on the jobsite, and are easy and inexpensive to install.

Our engineered floors feature a state-of-the-art UV-cured aluminum oxide finish that is among the most durable available, making our product ideal for demanding commercial as well as residential applications. Approx. \$508; and up /sq.ft.



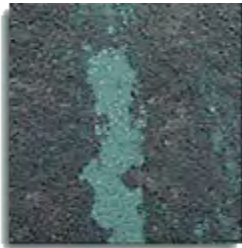
FSC - White Tigerwood – Honey



FSC - Brazilian Cherry



LOCAL SLATE



Mottle

Purple and Green combine to form unique patterns in each slate. Each slate has its own character. Produced in Vermont.

A very rich and beautiful color. As no black slate is quarried in Vermont, our black is from Eastern Pennsylvania.



Black



Grey

Light to medium in color, Vermont Grey is famous for its beautiful hues. It is very durable, and was first used for roofing. Produced in Vermont.

The color ranges from grey/purple through light to medium plum colors. Produced in Vermont.



Purple



Sea Green

Color varies from green to grey/green. Some have pronounced darker green veining. An entryway done in green blends perfectly with Mother Nature. Produced in Vermont.

The pinnacle of colored slate. Very rare, and quarried in Washington County, New York. It is the hardest and most durable of all slates



Red



Unfading Green

Shaded of green and grey/green. Some slates are a very vivid green, while others radiate a softer green hue. When used outdoors, the beautiful colors will not fade. Produced in Vermont.

Approx. Retail Price: \$2.95-\$6.50 /sq.ft.